

# Si-93

Sauermann® part # : SI93CE01UN23

## MEMBRANE PUMP



### Ultraflat pump with a solution against biofilm

Specially designed to handle the condensates from supermarket refrigerated display cabinets, the Si-93 pump also offers a proven solution against the formation of biofilm with its Gel-Clear tablet. The compact, ergonomic design of the pump facilitates installation under low-slung display cabinets.

## BENEFITS

NEW

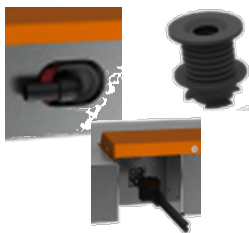


### • Gel-clear tablet: the proven anti-biofilm solution

- Keeps the condensate drain clear
- Reduces water leaks by 90-100%
- One tablet per case per year

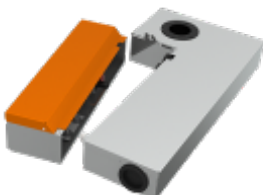
### • Easy installation – easy maintenance

- “Ultra-flat” profile: 89 mm high. Ergonomic design.
- Trap function included: control of odours and refrigeration loss.
- Three inlet points: top, right or left.
- Universal inlet adaptor: 32 – 40 – 50 mm, fast connection/disconnection.
- Adjustable outlet direction: can be turned to the left or right.
- Two debris collecting filters for easier cleaning.
- Plug-in power cable.
- Easy-opening cover: reduces maintenance time.

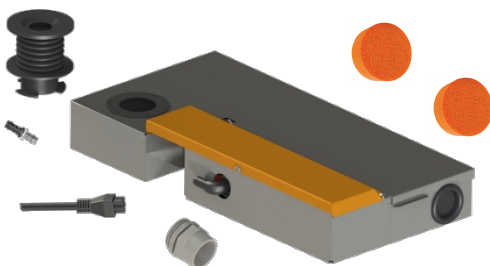


### • Reduced operation costs

- Less maintenance: preventing the formation of biofilm reduces the risk of water leaks and extends pump life.
- Stainless-steel construction: excellent corrosion resistance.
- Spare parts management: removable pump compartment for reduced replacement costs.
- Energy-saving: operating time reduced because of increased flow rate.



## KIT CONTENTS



### Stainless steel unit including:

- membrane pump
- integral detector,
- 1.5 m plug in power cable: 2 power wires, 2 safety contact wires.
- rubber top inlet adaptor int. diam 32, 40, and 50 mm.
- through the wall – Female diam. 40 mm side inlet.
- outlet discharge adaptor diam. 1/2" to 10 mm
- 2 Gel-clear tablets

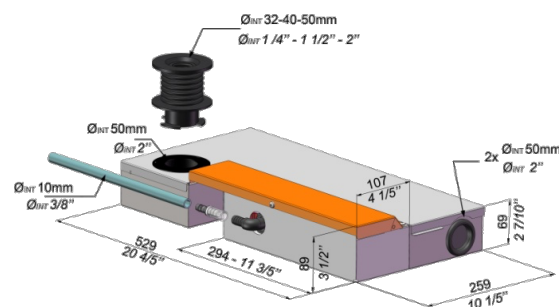
## APPLICATIONS

Fresh food (positive temperature) and frozen food (sub-zero temperature) display cabinets.



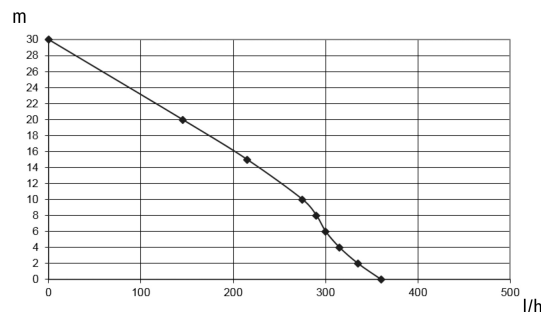
### TECHNICAL SPECIFICATIONS

Max. flow rate	360 l/h
Max. discharge head	20 m - Flowrate = 145 l/h
Max pressure	30 m - Flowrate = 0 l/h
Sound level at 1m (Measured at Sauermann lab, pump operating with water)	≤ 60 dBA
Mains supply	230 V~50/60 Hz - 60 W – 0.30 A
Detection levels	On: 46mm, Off: 29mm, Safety: 50mm
Safety switch	NO - 8 A resistive - 250 V
Operating conditions	30%: 3s ON – 7s OFF
Protection	IP20
Safety standards	CE and EAC
RoHS directive	Compliant
WEEE directive	Compliant
Pump dimensions	L : 366 x W : 107 x H : 89 mm
Tank dimensions	L : 529 x W : 259 x H : 69 mm
Tank capacity	6 liters
Packaging	6,7 kg – L600 x l 400 x H 120 mm
Masterpack	1 piece



### ACTUAL FLOW RATES (l/h)

	Total tube length using Ø int. 10 mm, (3/8")			
Discharge head	5 m	10 m	20 m	30 m
0 m	360	320	290	250
2 m	330	300	270	230
4 m	310	285	255	215
6 m		270	240	200
8 m		260	230	190
10 m		250	220	180
15 m			195	155
20 m			145	105



### RECOMMENDED ACCESSORIES



**Clear PVC hose**  
Øint. 3/8" (10 mm) – L : 25m  
ACC 00915



**Self-sealing fittings**  
for hose Ø int. 3/8" (10 mm)  
ACC 00920 (5 pieces)

### RECOMMENDED SPARE PARTS



**Detection for Si-93**  
SPSI9301



**Motor for Si-93**  
SPSI9302



**Gel Clear tablets**  
SPSI93T1 : 1 piece  
SPSI93T10 : 10 pieces