



**BIG FOOT**<sup>®</sup>  
SYSTEMS

# BIG FOOT SYSTEMS

Rooftop building services  
support systems

ANCILLARIES



+44 (0)1323 844 355



enquiry@bigfootsupport.com



www.bigfootsupport.com



@bigfootsystems



Simply a better way

# CONTENTS

## 3 Intro

About the Ancillaries range

## 4-5 Selector

Choose the right product

## 6-7 H Frame Set

Simple solution for pipe or duct

## 8 Fix-it Foot

Durable rubber support

## 9 Multi Foot

Versatile multi-purpose support

## 10-11 AV Pads Vibromats Mounting Platforms Swan Necks



# INTRO

Service containment such as duct, pipework and cable ladder/tray can be supported using a number of products from Big Foot Systems Ancillaries range.

Designed to protect lightweight modern roofs, these offer a range of benefits including cost and time-effective installation and improved system aesthetics without penetrating the roof top.



# WHAT'S ON YOUR ROOF?






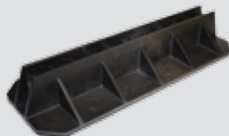
ANCILLARIES RANGE

Find the best solution for supporting services on your roof top using the simple Big Foot Systems Ancillaries range selector...



A non-penetrative range providing a quick to install support solution for ancillary services on the roof top.

Our standard product range is available next day from stock. Offering flexible solutions compatible with industry standard componentry.

SELECTOR		 H Frame Set 305 Page 6	 H Frame Set 450 & 600 Page 7	 Fix-it Foot Page 8	 Multi Foot Page 9
ELECTRICAL	Cable Basket			✓	
	Small Cable Tray	✓		✓	✓
	Larger Cable Tray	✓	✓	✓	✓
	Cable Ladder		✓		
	*Bus Bars		✓		
DUCT	Small Duct	✓			✓
	*Larger Duct	✓	✓		
	*Attenuators, (Silencers)		✓		
PIPE	Small F&R Pipe			✓	✓
	Medium F&R Pipe	✓			✓
	Large F&R Pipe		✓		
	*Multiple Pipe Runs		✓		

\*Weight dependant



# H Frame Set 305mm (12")

H Frame Sets are an economical support solution for pipe or duct. They accept a range of strut, and by fabricating the frame on-site, they are the flexible choice

### FEATURES

- 305mm (12") feet
- Interchangeable with three strut\* sizes:  
21 x 41mm (13/16 x 1 5/8")  
40 x 38mm (1 9/16 x 1 1/2")  
41 x 41mm (1 5/8 x 1 5/8")
- Versatile application
- Adhered rubber mats provide additional roof protection
- Boxed for convenience



### H FRAME SET

Description	Part no.	Foot Size		Weight		Max. Load	
		mm	Inches	Kg	Lbs	Kg	Lbs
305mm (12")	<b>B6088</b>	305	12	3.65	8	300	661
305mm (12") - 5 Pack	<b>B9645</b>	305	12	18.25	40	300	661

### KIT INCLUDES

Foot with adhered mat	× 2
Bracket & fixings	× 4
Assembly instructions	× 1

\*Please note: Strut is **not** included in the kit, and is shown as an example

# H Frame Set 450mm (18") 600mm (24")

Where a greater load distribution is required for applications such as large ductwork, 450mm (18") or 600mm (24") H Frame Sets are also available

### FEATURES

- 450mm (18") or 600mm (24") feet
- Suits 41 x 41mm (1 5/8 x 1 5/8") strut\*
- Excellent load distribution
- Versatile application
- Rubber mats provide additional roof protection
- Boxed for convenience



### H FRAME SET

Description	Part no.	Foot Size		Weight		Max. Load	
		mm	Inches	Kg	Lbs	Kg	Lbs
450mm (18")	<b>B6089</b>	450	17 1/4	14	31	500	1102
600mm (24")	<b>B9222</b>	600	23 3/4	25	55	500	1102

### KIT INCLUDES

Foot	× 2
Rubber mat	× 2
Strut Insert	× 2
Bracket & fixings	× 2
Assembly instructions	× 1

\*Please note: Strut is **not** included in the kit, and is shown as an example



# Multi Foot

Multi Foot is a multi-purpose support for cable tray or pipe. Used with channel, strut or threaded rod, this simple nylon foot is both versatile and economical

### FEATURES

- Quick and easy install
- Available in 2 sizes
- Rigid nylon foot
- Versatile application using channel, strut or threaded rod
- Accepts a full range of strut sizes
- Adhered rubber mats provide additional roof protection
- Boxed for convenience



### MULTI FOOT PACKS

Description	Part no.	Length		Width		Height		Weight		Max. Load	
		mm	Inches	mm	Inches	mm	Inches	Kg	Lbs	Kg	Lbs
400mm (16") - 4 Pack	<b>B9640</b>	400	15 3/4	180	7 1/16	80	3 1/8	6	13.2	259	571
600mm (24") - 3 Pack	<b>B9655</b>	600	23 5/8	220	8 1/16	80	3 1/8	11.7	25.7	474	1045

# Fix-it Foot & High Bloc

The neat and tidy rubber Fix-it Foot is simple, durable and comes in a variety of sizes. Extra clearance can be created using a High Bloc which fits underneath

### FEATURES

- Quick and simple install
- Aluminium channel securley anchored in top for easy fixing of services
- Wide range of height and length options available
- Durable recycled rubber reduces vibration and adds stability



### FIX-IT FOOT

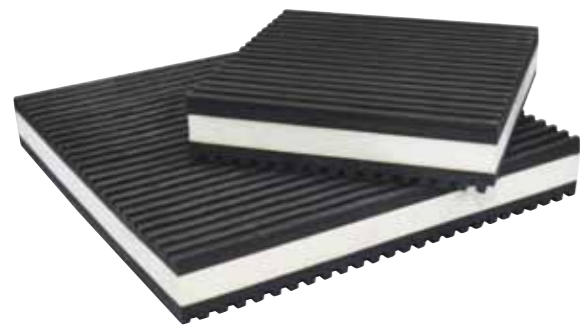
Description	Part no.	Length		Width		Height		Weight		Max. Load	
		mm	Inches	mm	Inches	mm	Inches	Kg	Lbs	Kg	Lbs
250 (10")	<b>B6735</b>	250	9 13/16	180	7 1/16	95	3 3/4	2.4	5.3	82	181
400 (16")	<b>B6736</b>	400	15 3/4	180	7 1/16	95	3 3/4	3.5	7.8	128	282
600 (24")	<b>B6737</b>	600	23 5/8	180	7 1/16	95	3 3/4	5.8	12.7	224	494
1000 (40")	<b>B9096</b>	1000	39 3/8	180	7 1/16	95	3 3/4	9.9	21.9	295	650
250 (10") Low	<b>B9043</b>	250	9 13/16	130	5 1/8	50	1 15/16	1.3	2.9	82	181
400 (16") Low	<b>B9045</b>	400	15 3/4	130	5 1/8	50	1 15/16	2.1	4.5	128	282
500 (20") Low	<b>B9368</b>	500	19 11/16	130	5 1/8	50	1 15/16	2.5	5.4	134	295
600 (24") High Bloc	<b>B6974</b>	600	23 5/8	180	7 1/16	120	4 3/4	10.2	22.4	224	494
1000 (40") High Bloc	<b>B6973</b>	1000	39 3/8	180	7 1/16	120	4 3/4	17.7	38.9	295	650

# AV Pads

AV Pads come in a range of sizes and offer isolation against vibration between the unit and the Big Foot Frame

### FEATURES

- Anti-vibration core
- Outer layer corrugated anti-slip rubber
- Available in 6 sizes



### AV PADS

Description	Part no.	Length		Width		Height	
		mm	Inches	mm	Inches	mm	Inches
51mm (2")	<b>B6909</b>	51	2	51	2	22.2	¾
76mm (3")	<b>B6910</b>	76	3	76	3	22.2	¾
101mm (4")	<b>B6911</b>	101	4	101	4	22.2	¾
152mm (6")	<b>B6912</b>	152	6	152	6	22.2	¾
305mm (12")	<b>B6913</b>	305	12	305	12	22.2	¾
457mm (18")	<b>B6914</b>	457	18	457	18	22.2	¾

# Mounting Platforms

A simple platform support using either our 305mm (12") or 450mm (18") feet, available with a plain, 2 or 4 sided top

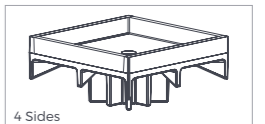
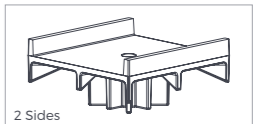
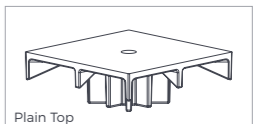
### FEATURES

- Simple and versatile kit
- Central M10 threaded insert on the platform



### MOUNTING PLATFORMS

Description	Part no.	Useable Area	
		mm	Inches
305mm (12") Plain Top	<b>B9098</b>	126 × 126	5 × 5
305mm (12") 2 Sides	<b>B9099</b>	114 × 126	4 ½ × 5
305mm (12") 4 Sides	<b>B9100</b>	114 × 114	4 ½ × 4 ½
450mm (18") Plain Top	<b>B9101</b>	126 × 126	5 × 5
450mm (18") 2 Sides	<b>B9102</b>	114 × 126	4 ½ × 5
450mm (18") 4 Sides	<b>B9103</b>	114 × 114	4 ½ × 4 ½



### KIT INCLUDES

- Platform × 2
- Foot & mat × 2

# Vibromats

A range of durable rubber mats that can lay directly on the rooftop to protect it from potential damage from foot fall and ancillary equipment

### FEATURES

- Ideal for walkways and to protect roof surfaces
- Durable recycled rubber reduces vibration
- 4 options available\*



### VIBROMATS

Description	Part no.	Length		Width		Height	
		mm	Inches	mm	Inches	mm	Inches
Small Strip*	<b>B6491</b>	600	23 ¾	150	5 ¾	30	1 ¾
Large Strip*	<b>B6282</b>	1000	39 ¾	500	19 ¾	30	1 ¾
Plain Tile	<b>B6416</b>	500	19 ¾	500	19 ¾	45	1 ¾
Plain Strip	<b>B6024</b>	1000	39 ¾	75	3	15	¾

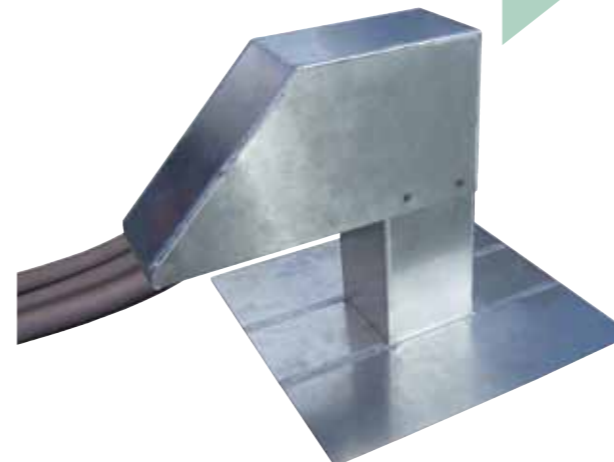
\*NOTE: Small Strip and Large Strip include 2 no. steel plate core at either end

# Swan Necks

When penetrating the roof with cable or pipe runs, our Swan Necks make a full seal with the roof membrane

### FEATURES

- Lightweight aluminium
- Full hood to protect against rain ingress
- Range of sizes



### SWAN NECKS

Description	Part no.	Outlet Size		No. of Outlets	Height	
		mm	Inches		mm	Inches
Square Small	<b>B9154</b>	75 × 75	3 × 3	1	484	15 ¾
Square Medium	<b>B9148</b>	125 × 125	5 × 5	1	484	15 ¾
Square Large	<b>B9149</b>	200 × 200	8 × 8	1	484	15 ¾
Oblong Small	<b>B9150</b>	125 × 250	5 × 10	1	484	15 ¾
Oblong Double	<b>B9152</b>	125 × 250	5 × 10	2	484	15 ¾
Oblong Large	<b>B9151</b>	125 × 500	5 × 20	1	484	15 ¾





# THE RANGE

There's more... Big Foot Systems offers you the most comprehensive range of non-penetrative rooftop support products. From small AC units to heavy plant such as chillers, we are yet to encounter a scenario under which we haven't been able to design a solution.

Contact our team today!



- +44 (0)1323 844 355
- enquiry@bigfootsupport.com
- www.bigfootsupport.com
- @bigfootsystems

Simply a better way



Head Office: Big Foot Systems Ltd.,  
Apex Way, Hailsham, East Sussex BN27 3WA, UK

DISCLAIMER: Big Foot Systems takes no responsibility for the condition of the roof on which our equipment is to be used. You must ensure that the substrate on which the Big Foot Systems is intended for use is structurally sound enough to take the weight and point loadings we have indicated.

All Big Foot Systems products must be installed in line with the guarantees and recommendations of the manufacturer of the roofing system. The manufacturer of PVC membranes should advise on the susceptibility to migration of plasticizers and specific recommendations should be adhered to so that the roof guarantee is not affected.